

WESTBURY-ON-SEVERN C of E PRIMARY SCHOOL

The Village
Westbury-on-Severn
Gloucestershire
GL14 1PA

Telephone (01452) 760303

Head Teacher: Mr D. Crunkhurn

Email: admin@westbury-on-severncofe.gloucs.sch.uk



**Westbury-on-Severn
CE Primary School**

20.03.20

Dear Parents/Carers,

It is indeed a sad situation that we face. My staff and I are very upset that we will not be able to see you as families, though I will try to keep in contact as much as will be possible. Please be assured we are doing all that we can to keep things going, but it is our duty to support the effort to keep our community and each other safe. Therefore the following information is extremely important to follow. We cannot make exceptions to the government guidelines, but will always try to be fair and just, following the school values that we hold so dear.

Following the recent guidelines of what constitutes key workers, I am able to share this with you. For both parents of a child that fall into this category, we will remain open for your children only whilst you are at work between the hours of 8.45am to 3pm.

I must make it very clear; this provision is not regular schooling. This will be a provision for children to ensure key workers are able to attend work to support the reduction of the spread of COVID-19.

If there is another parent/carer at home that is able to look after your child, then your child should not come to the school.

Westbury-on-Severn CE Primary School, like many other schools, will be giving priority for provision to children whose parents are **both** key workers. The only exception for this will be for children who have only one parent with parental responsibility and who is a key worker.

Vulnerable children include children who are supported by social care, those with safeguarding and welfare needs, including child in need plans, on child protection plans, 'looked after' children, young carers, disabled children and those with education, health and care (EHC) plans.

Please read the following information that has been sent out from the government today.

*Parents whose work is critical to the COVID-19 response include those who work in health and social care and in other key sectors outlined below. Many parents working in these sectors may be able to ensure their child is kept at home. **And every child who can be safely cared for at home should be.***

Please, therefore, follow these key principles:

- **If it is at all possible for children to be at home, then they should be.**
- **If a child needs specialist support, is vulnerable or has a parent who is a critical worker, then educational provision will be available for them.**
- **Parents should not rely for childcare upon those who are advised to be in the stringent social distancing category such as grandparents, friends, or family members with underlying conditions.**
- **Parents should also do everything they can to ensure children are not mixing socially in a way which can continue to spread the virus. They should observe the same social distancing principles as adults.**



- Residential special schools, boarding schools and special settings continue to care for children wherever possible.

If your work is critical to the COVID-19 response, or you work in one of the critical sectors as stated by the government listed below, and you cannot keep your child safe at home then your children will be prioritised for our provision:

Health and social care

This includes but is not limited to doctors, nurses, midwives, paramedics, social workers, care workers, and other frontline health and social care staff including volunteers; the support and specialist staff required to maintain the UK's health and social care sector; those working as part of the health and social care supply chain, including producers and distributors of medicines and medical and personal protective equipment.

Education and childcare

This includes nursery and teaching staff, social workers and those specialist education professionals who must remain active during the COVID-19 response to deliver this approach.

Key public services

This includes those essential to the running of the justice system, religious staff, charities and workers delivering key frontline services, those responsible for the management of the deceased, and journalists and broadcasters who are providing public service broadcasting.

Local and national government

This only includes those administrative occupations essential to the effective delivery of the COVID-19 response or delivering essential public services such as the payment of benefits, including in government agencies and arms length bodies.

Food and other necessary goods

This includes those involved in food production, processing, distribution, sale and delivery as well as those essential to the provision of other key goods (for example hygienic and veterinary medicines).

Public safety and national security

This includes police and support staff, Ministry of Defence civilians, contractor and armed forces personnel (those critical to the delivery of key defence and national security outputs and essential to the response to the COVID-19 pandemic), fire and rescue service employees (including support staff), National Crime Agency staff, those maintaining border security, prison and probation staff and other national security roles, including those overseas.

Transport

This includes those who will keep the air, water, road and rail passenger and freight transport modes operating during the COVID-19 response, including those working on transport systems through which supply chains pass.

Utilities, communication and financial services

This includes staff needed for essential financial services provision (including but not limited to workers in banks, building societies and financial market infrastructure), the oil, gas, electricity and water sectors (including sewerage), information technology and data infrastructure sector and primary industry supplies to continue during the COVID-19 response, as well as key staff working in the civil nuclear, chemicals, telecommunications (including but not limited to network operations, field engineering, call centre staff, IT and data infrastructure, 999 and 111 critical services), postal services and delivery, payments providers and waste disposal sectors.

If workers think they fall within the critical categories above they should confirm with their employer that, based on their business continuity arrangements, their specific role is necessary for the continuation of this essential public service.

(Gov.UK Guidance Published 19 March 2020)

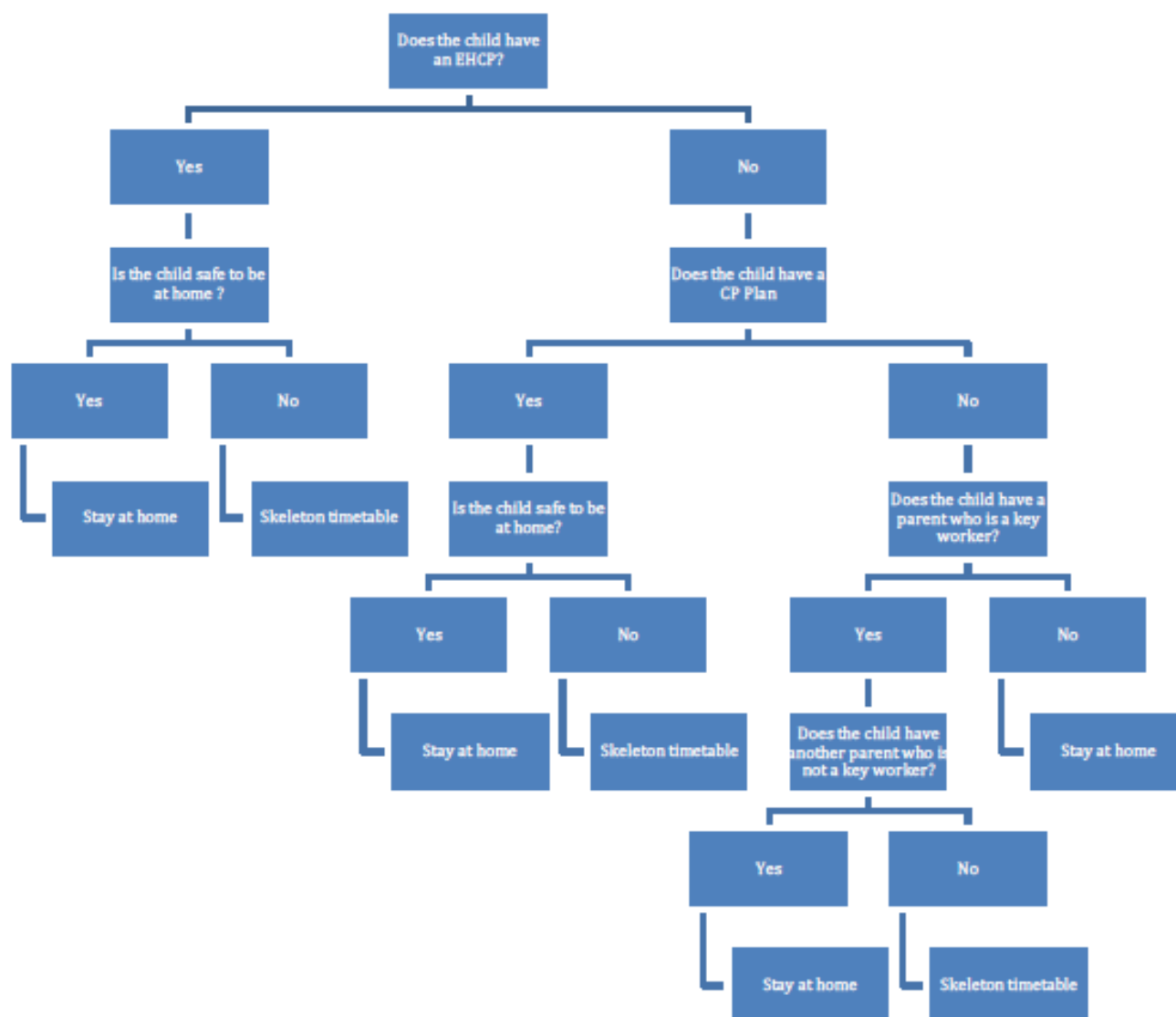


Please remember schools have been closed to maximise social distancing to slow the spread of COVID-19. We would therefore ask that you provide us with confirmation from your employer that you are classed as a key worker. I am sorry to have to ask this, but it is essential that we accommodate only the children we should.

It is important to note that it is vitally important that your child only attends the provision if you cannot keep your child at home **AND** you fall into the category of key worker as listed above. Our provision is not child-minding, but providing a strategic service to support our community and those keeping our communities going. If you are not working and are a key worker, then your child should not come to school. Please remember that staff in school are just as vulnerable to Covid-19 as anyone else. We do not want to increase the risk to our staff or we will need to close altogether and your children will need to have provision in another setting, wherever that may be.

We are aware that many parents work part time jobs or shift patterns so we are asking that you present to the school your working pattern so we are able to hopefully ensure provision and safeguarding of your children, if they need to be here.

Please see below the flowchart for you to use if you are unsure if your child may access the school's provision. We will be using this to assess all requests for a place here.



It is essential that you inform the school **by 12pm on SATURDAY 21st March 2020** if you feel your child should be attending school on Monday. This is important as I can plan for provision and staffing over the weekend. We will confirm after 12 pm on Saturday 21st March whether we will accommodate your child next week.

We have been informed that the school buses will operate as usual, so if you would normally send your child to school this way, then you still can. However, I would advise you that your child may be the only one on the bus, so consider carefully whether it is safer to transport your child to school yourself, if they are to attend.

It will not be necessary to wear school uniform. Children will need a change of clothes for PE on Monday and Friday. Forest school and Wellie Wednesday activities will not take place. However, if any outdoor activities are due to take place, we will let you know beforehand. We ask that children attend school each day in different clean clothes that can be removed once they are at home and washed. This will help to stop any potential virus germs from spreading amongst the children.

Hot school lunches will still be provided if your child requires one. These can be ordered on a daily basis. However, we will not know what the choice will be until the day. We expect there to be two choices, but this may not be the case. Lunches will still require payment through your usual parentpay account, or payable through cash or cheque to the school office. Alternatively, your child could bring a packed lunch.

Finally, I want to thank you all, on such a strange and quick escalation to our global situation, for the pleasure of working with you all and your amazing and resilient children. They are a credit to you all and to our community. If they are the future of our country, then I know we are all in safe hands.

As much as we all can, I pray that you and your whole family, wherever they are, are able to have a safe and secure time ahead. Please be assured that I will be thinking and praying for our amazing Westbury family each and every day, so please join me wherever you are.

God bless you all,

David

Headteacher

Westbury-on-Severn CE Primary School

